

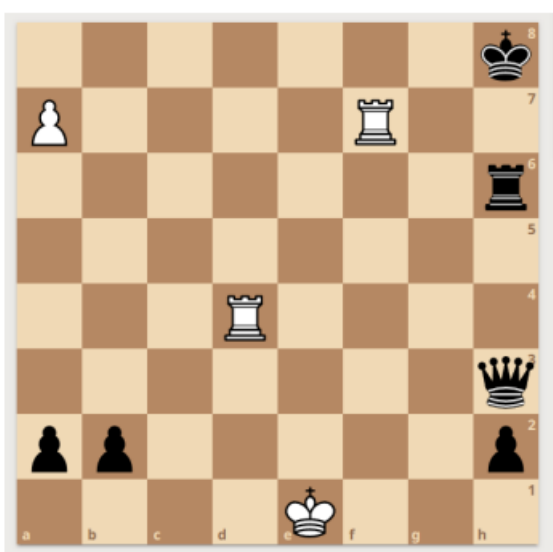
Federico puzzle: white or black to checkmate in 1 move



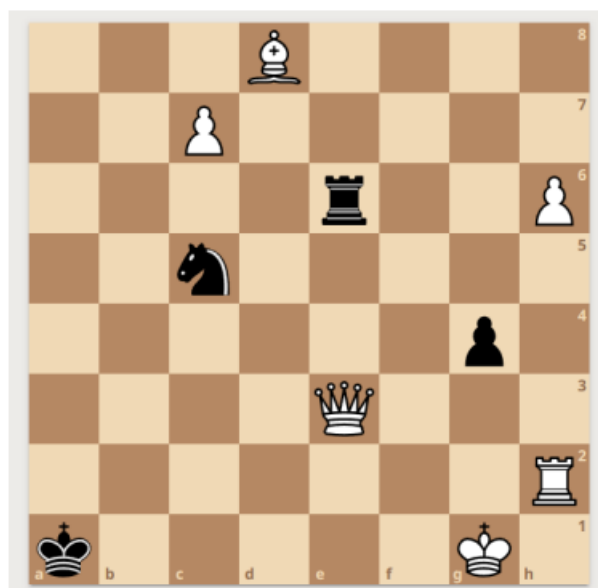
Arthur Yr 4 puzzle: white to checkmate in 1 move



Ahmed Yr 4 puzzle: white to checkmate in 1 move



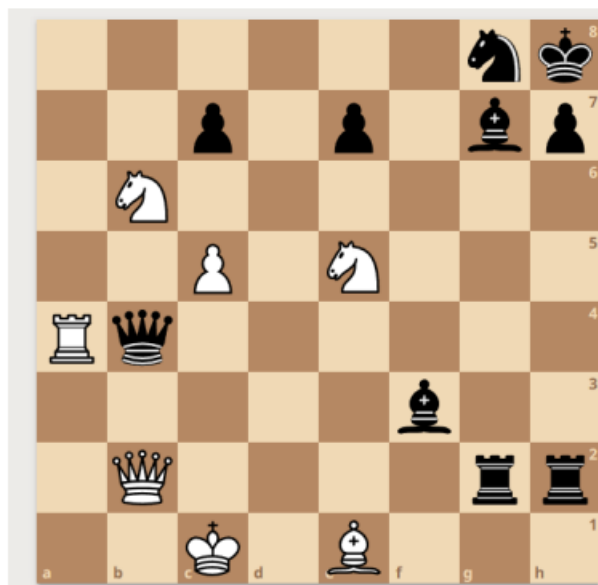
Jasmin Yr 4 puzzle: white to checkmate in 1 move



Charlie Yr 5 puzzle: White to checkmate in 1 move



Jude Year 5 puzzle: White to checkmate in one move



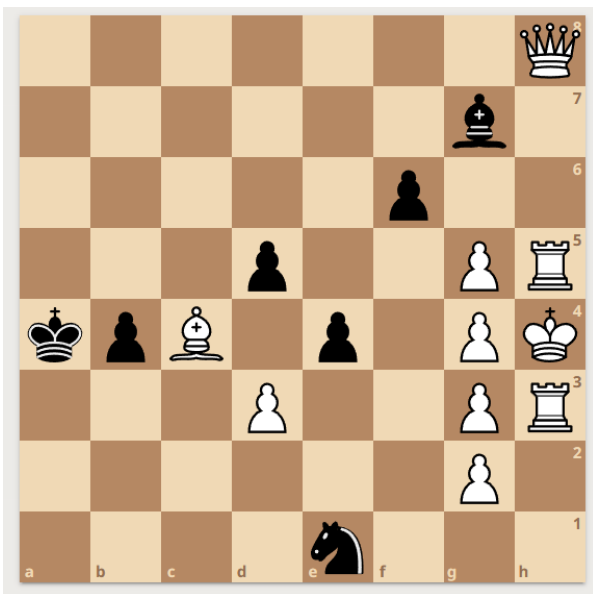
Ari Yr 5 puzzle: Black to checkmate in 1 move



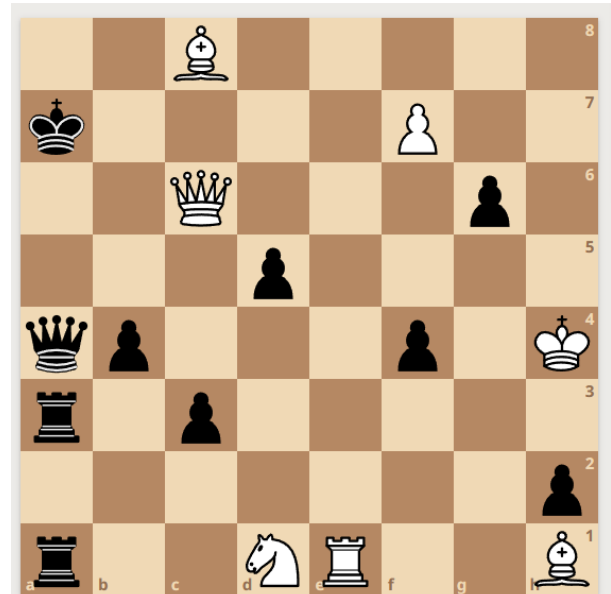
Miles Year 5 puzzle: White to checkmate in one move



Lilly Year 4 white or black to checkmate in one move



Arthur Year 4 white to checkmate in one move



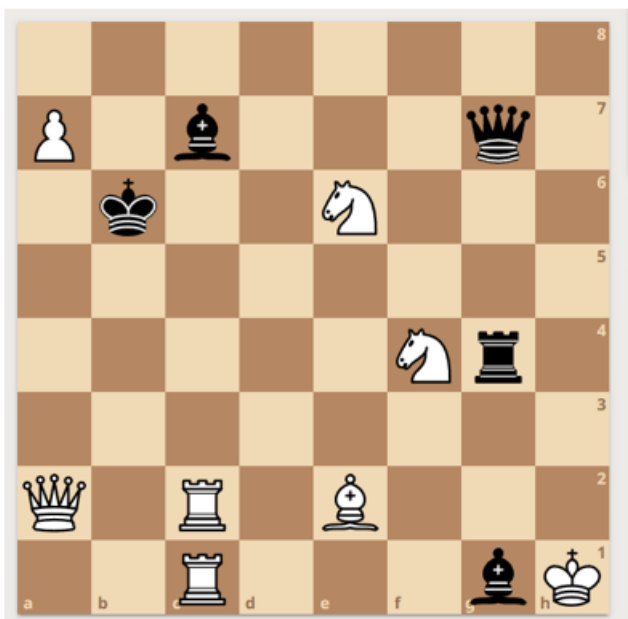
Ahmed Year 4 puzzle: White to checkmate in one move



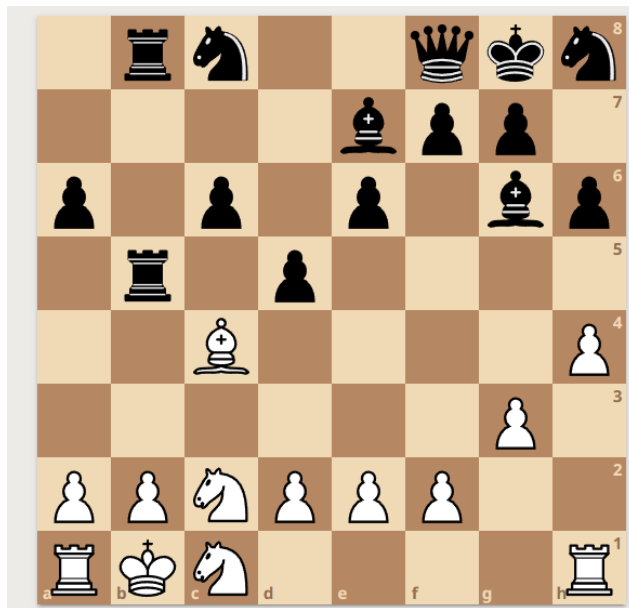
Flynn Yr 5 puzzle: White to checkmate in 1 move



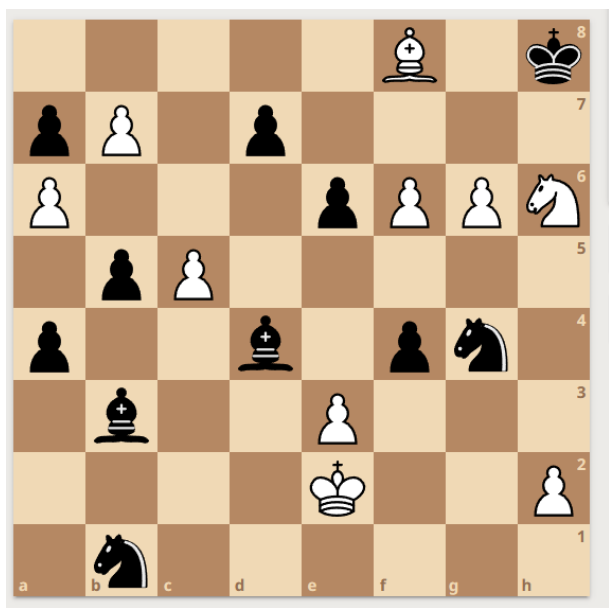
Puzzle by Athur Yr 4. Checkmate in 1 move for white.



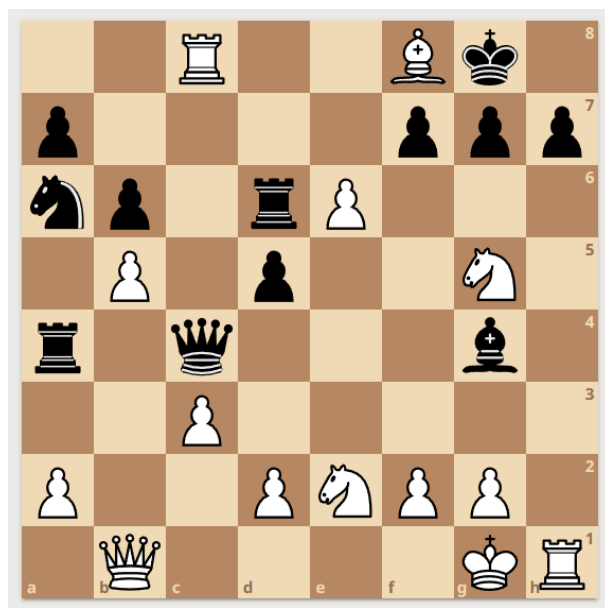
Puzzle by Tilly Yr6. Checkmate in 1 move for black



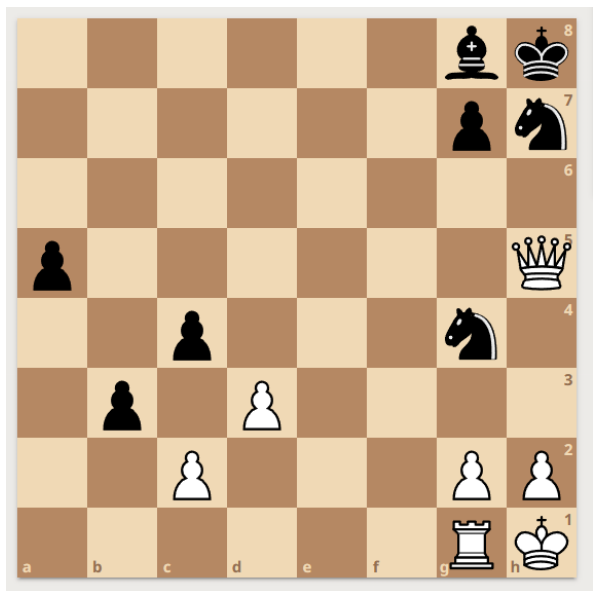
Puzzle by Miray Yr4. Checkmate in 1 move for white



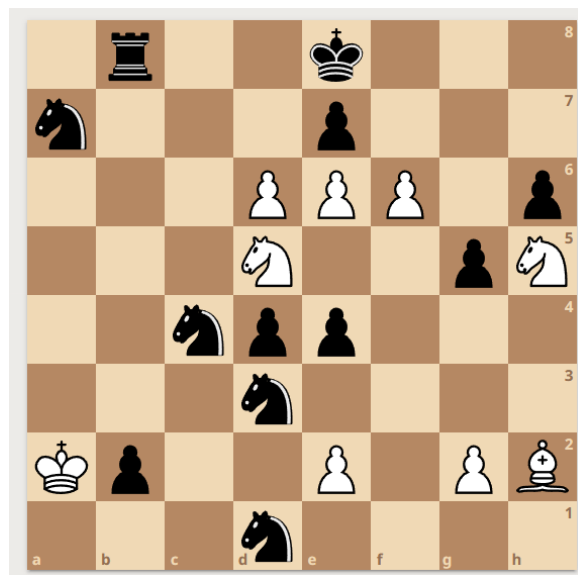
Puzzle by Ida Yr 4. Checkmate in 1 move for white



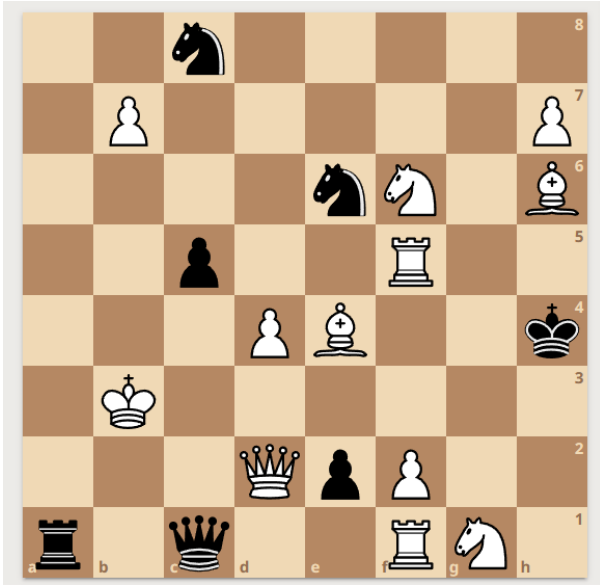
Puzzle by Rufus Yr6. Checkmate in 1 move for black



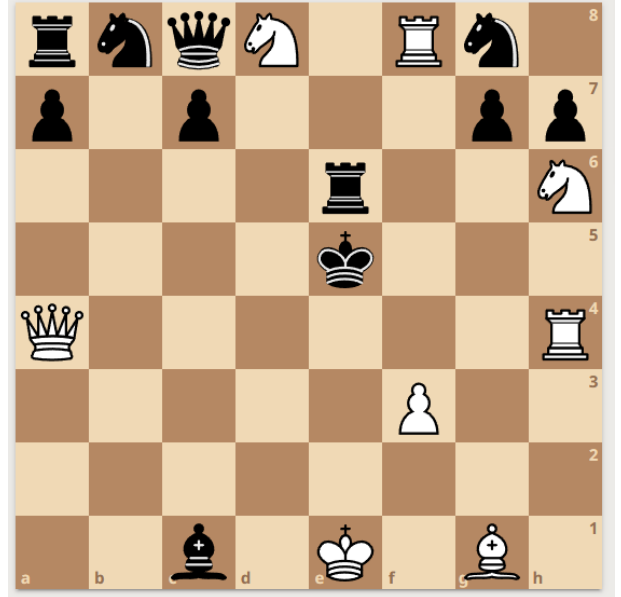
Puzzle by Arthur Yr4. Checkmate in 1 move for black



Puzzle by Veremii Yr4. Checkmate in 1 move for white



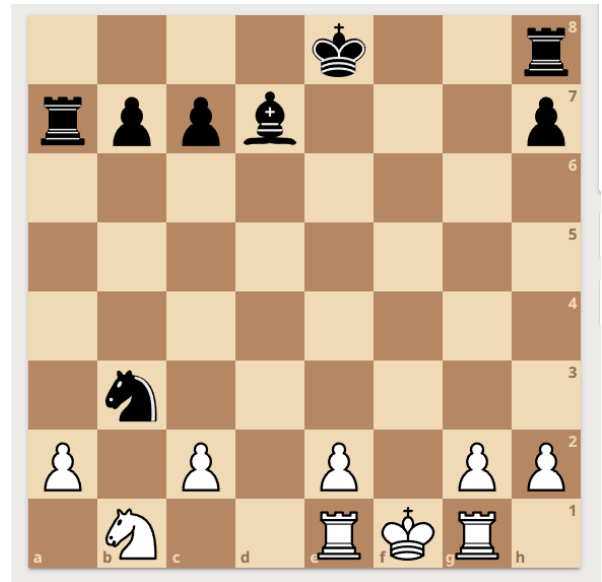
Puzzle by Zachary Yr4. Checkmate in 1 move for white



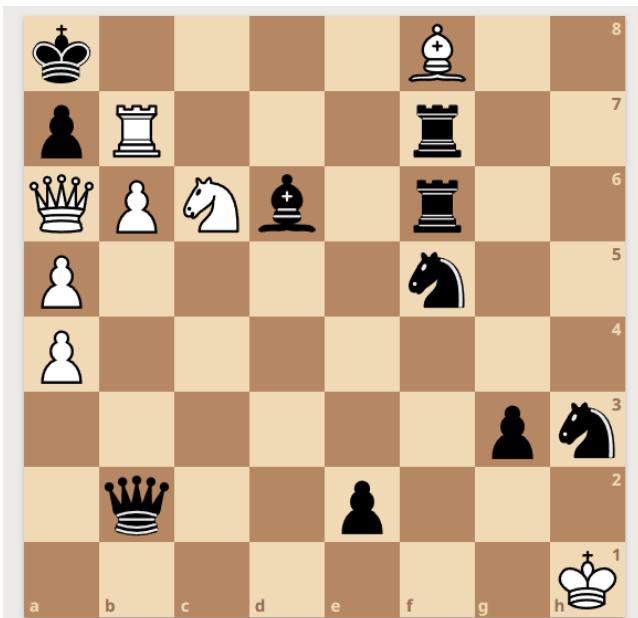
Puzzle by Blake Yr 5. Checkmate in 1 move for white



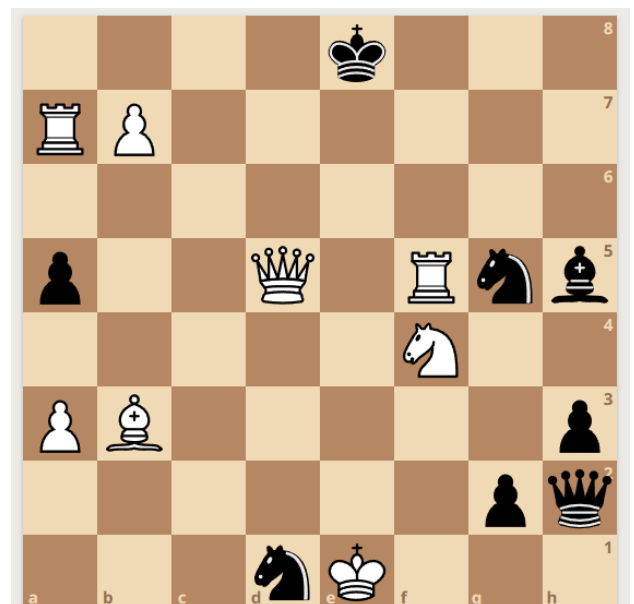
Puzzle by Harry C Yr4. Checkmate in 1 move for black



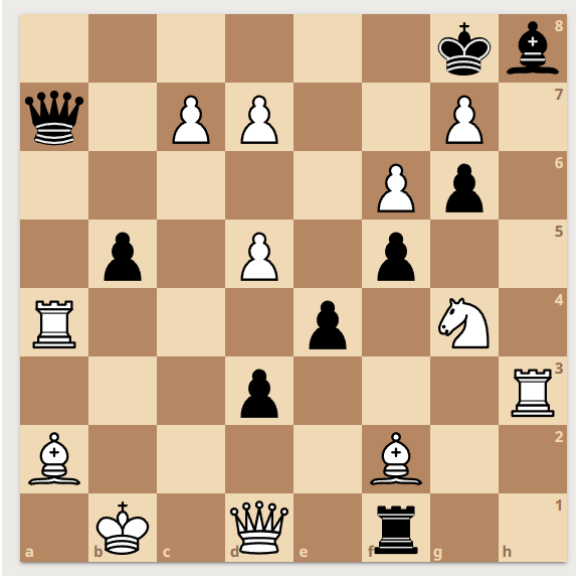
Puzzle by Ahmed Yr 4. Checkmate in 1 move for white



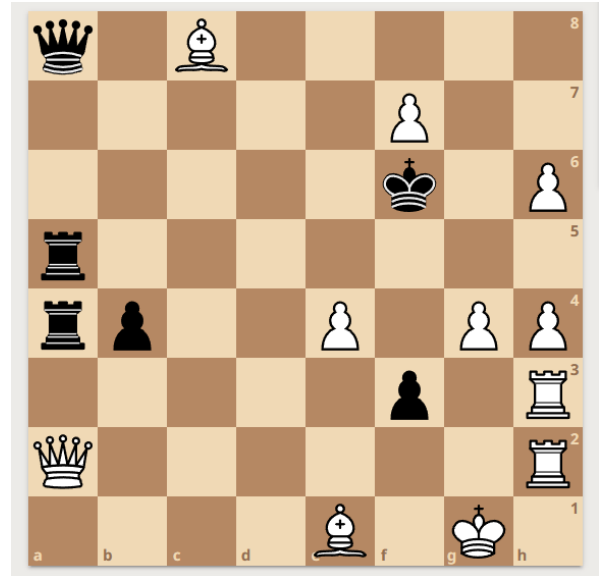
Puzzle by Arthur Yr4. Mate in 1 move for black or white



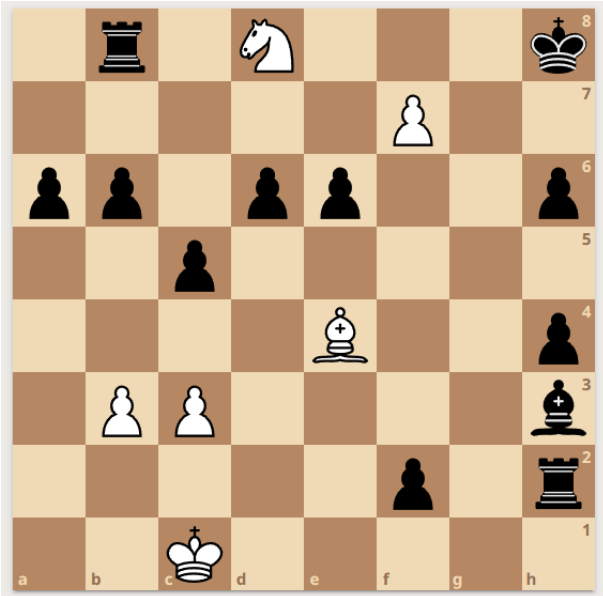
Puzzle by Abigail Yr4. Checkmate in 1 move for white



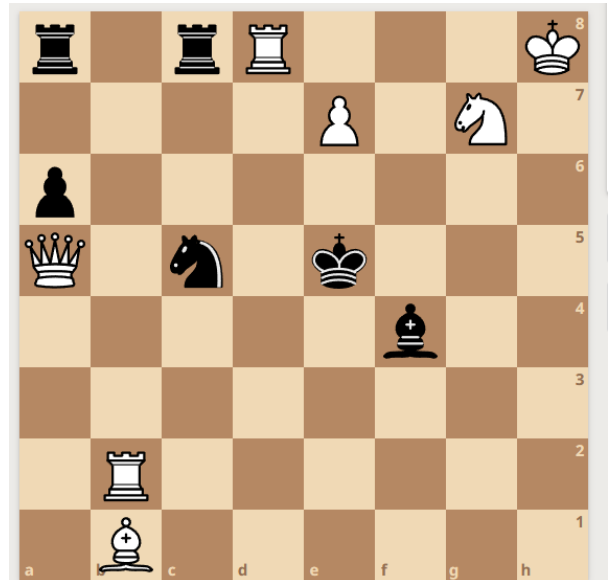
Puzzle by Arthur Yr4. Checkmate in 1 move for white



Puzzle by Ahmed Yr 4. Mate in 1 move for white or black



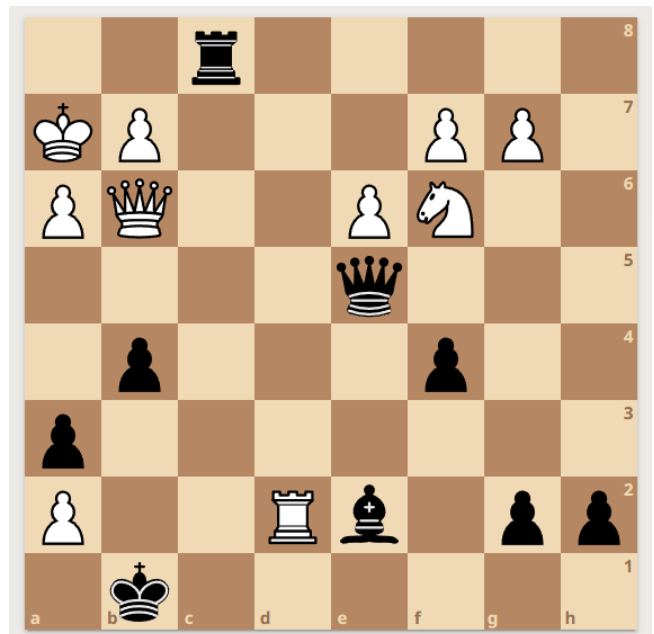
Puzzle by Amelia Yr4. Checkmate in 1 move for white



Puzzle by Joshan Yr 6. Checkmate in 1 move for white



Puzzle by Harry C Yr4. Checkmate in 1 move for black



Checkmate puzzles are hard to create and the HHJS children have done well to make these puzzles. A good puzzle should show a legal chess position. There should be multiple check possibilities, to give the solver a challenge, but only one checkmate solution.

The answers to the puzzles are:

Page 1

Federico Year 5 white to move Qc8#: lots of possible checks for both white and black in this puzzle but just one
black to move Bc3# hard to spot checkmate for each colour. Takes some thinking skill!

Arthur Year 4 white to move Qa8#: white's pieces work together for checkmate

Ahmed Year 4 white to move Rd8#: a lawnmower style checkmate with both rooks.

Jasmin Year 4 white to move Qc1#: careful consideration needed to place the queen correctly.

Charlie Year 5 white to move Qf7#: eight checks to consider. One checkmate!

Jude Year 5 white to move Nf7#: a smothered mate for the black king.

Page 2

Ari Year 5 black to move Qb2#: the queen is needed with a helper rook on the same file.

Miles Year 5 white to move Qh8#: a back rank checkmate where the black king has not made himself an escape hatch.

Lilly Year 4 white to move: Qa8# queen delivers checkmate with a well-placed bishop guarding escape squares
black to move: Nxc2# a super smothered mate

Arthur Year 4 white to move Qb7#: a kiss of death mate. Notice how black has a powerful 3-piece battery on the board,
but isn't aiming at the white king. White finds checkmate with better placed pieces.

Ahmed Year 4 white to move g7#: five pieces in teamwork for this checkmate

Flynn Year 5 white to move Qxd7#: a queen checkmate directly in front of the king, with a knight helper

Page 3

Arthur Year 4 white to move Qa6#: despite the powerful 2 rook battery, the queen is needed here with bishop helper.

Tilly Year 6 black to move Rxb2#: a battery of rooks onto a smothered white king.

Miray Year 4 white to move Bg7#: a cornered king with four white pieces working together.

Ida Year 4 white to move Qxh7#: a good h file attack onto a castled king.

Rufus Year 6 black to move Nf2#: a smothered white king has nowhere to escape.

Arthur Year 4 black to move b1=Q#: numerous knights are circling the king, but promotion delivers checkmate.

Page 7

Page 4

Veremii Year 4 white to move Rh5#: numerous white pieces are circling the king, but just one checkmate is possible.

Zachary Year 4 white to move Qd4#: great puzzle with numerous checks needing careful consideration.

Blake Year 5 white to move Ne6#: so many checks! look carefully to find the checkmate.

Harry C Year 4 black to move Rf8#: a smothered style of checkmate

Ahmed Year 4 white to move Qa7#: a cornered king with three check opportunities but only one checkmate.

Arthur Year 4 white to move: b8=Q/R# both white and black have checkmate on promotion squares.

Black to move: g1=Q/R#

Page 5

Abigail Year 4 white to move d6#: a powerful revealed checkmate.

Arthur Year 4 white to move Qe6#: bishop protects the queen. A helper checkmate.

Ahmed Year 4 white to move Qf8=Q#: both white and black have checkmate on promotion squares.

Black to move f1=Q/R#:

Amelia Year 4 white to move Qc3#: teamwork with many of white's pieces working together to trap the king.

Joshua Year 6 white to move Qg7#: the black king in the corner is defeated by a kiss of death from the white queen.

Harry C Year 4 black to move Qb8#: the white king's escape is prevented by its own pieces.